



TuffWrap[®]

TUFFWRAP INSTALLATIONS. TUFF ON DUST AND DEBRIS.
Protecting People, Products & Property

**INTERIOR WALLS
PRESENTATION**

AGENDA/INTROS

- Introductions
- Why Roofers Look to TuffWrap?
- XYZ Roofing Co Situation
- TuffWrap Solution
- Questions & Answers
- Next Steps



WHY LOOK TO TUFFWRAP?

SAFETY

- Concerns of damage/injuries to People, Products & Property
- Identify and handle potential hazards on jobsite
- Certified and trained workers

WHY LOOK TO TUFFWRAP?

LIABILITY

- Can't afford product contamination and recalls
- Risk of damage to equipment or facility
- Production stoppage or shutdown
- Loss of revenue to client
- Safety concerns and injuries

WHY ROOFERS LOOK TO TUFFWRAP?

COMPLIANCE

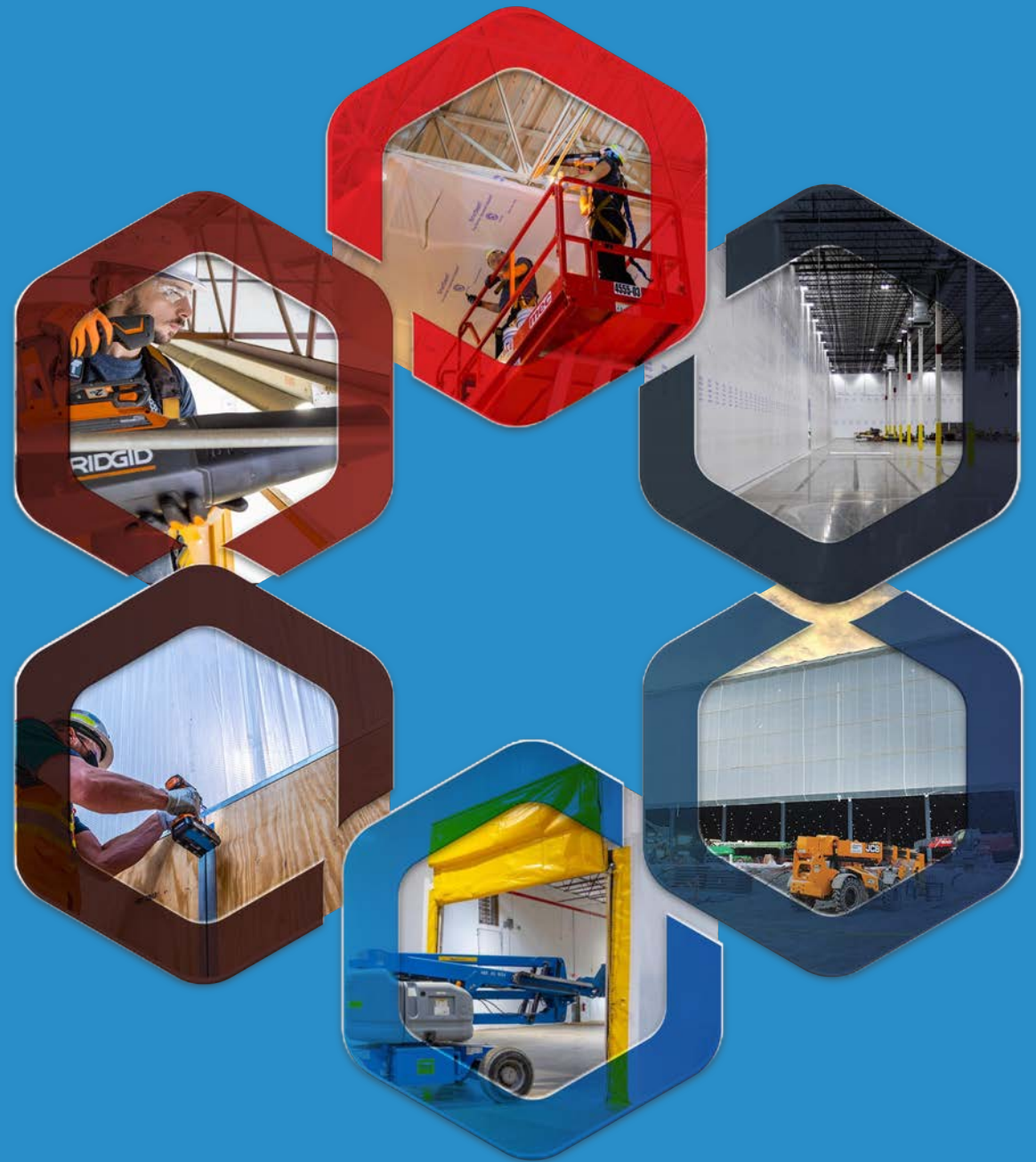
- Meets full compliance with industry qualifications/standards
- Keeps facility operational during construction
- Identifies job hazards to keep people safe and injury free
- ISNetworld Member Contractor - safe, reliable and sustainable



TuffWrap®

Protecting People, Products & Property

TuffWrap has 20+ years experience pioneering dust, debris and weather containment solutions serving all industries throughout North America.

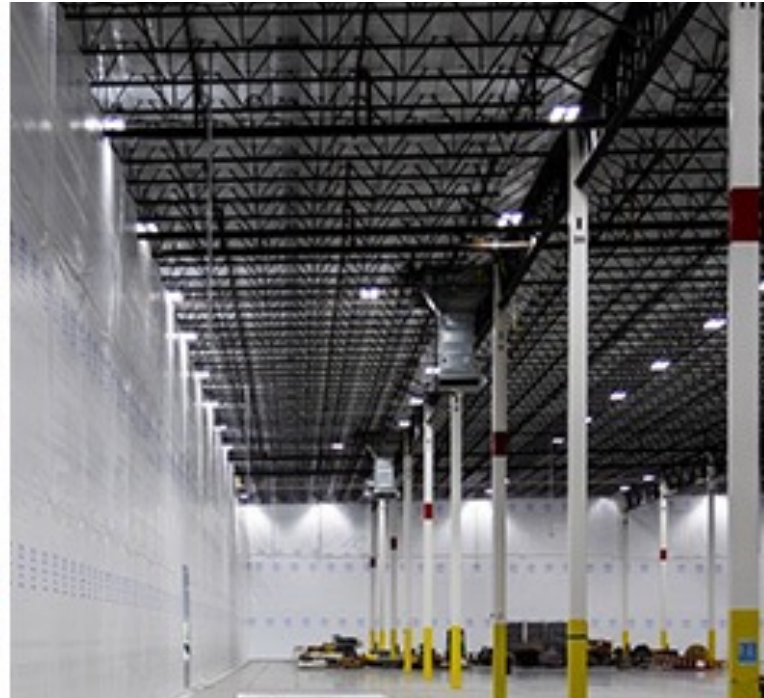


Aerospace | Food & Beverage | Industrial & Commercial | Manufacturing | Pharmaceutical | Warehouse & Distribution

TUFFWRAP SOLUTIONS



SUSPENDED COVER



INTERIOR WALLS



EXTERIOR WALLS

North America's leading provider of innovative construction containment solutions.

Suspended Cover SmartSeam® • C.O.R.E. Frameless Walls® • TuffWrap EXT® Exterior Protection
TuffWrap® Hybrid Walls • TuffWrap® Total Enclosure • High Structure Dust Removal • TuffWrap® Construction Doors

THE TUFFWRAP DIFFERENCE

- Customized approach to meet the specific job requirements
- Use flame resistant, antistatic and antimicrobial poly material
- Safety Program meets industry qualifications and overseen by TuffWrap Safety Manager



INNOVATION IN DUST,
DEBRIS & WEATHER
CONTAINMENT

THE TUFFWRAP DIFFERENCE

- Regional Sales Managers available nationwide to help clients' plan for interior protection
- Project Manager/Estimators located regionally to estimate and manage projects
- Fully staffed headquarters dedicated to the details of each project
- No "subbing"- 100% Employee Installation Team always onsite



INNOVATION IN DUST,
DEBRIS & WEATHER
CONTAINMENT

XYZ COMPANY SITUATION

- Concerned about inventory
- Can't afford a shutdown
- Can't afford to put people at risk
- Tight timeframe





Project Management Team

SAFETY, RELIABILITY, & BEST PRACTICES
Committed to client relationships and the success of the project



SAFETY



FLEXIBLE SCHEDULING



COMMUNICATION



NO SUBCONTRACTORS

TuffWrap uses Proprietary Installation Methods & Member of ISNetwork



Project Management Team

- **HQ Operations Team**
- **A nationwide, regionally located, Sales and Project Management Team**
- **An expert Installation Team to meet your schedule and job size requirements**
- **An in-house Safety Program and full-time Safety Manager**
- **A dedicated Project Manager and Project Coordinator**



Suspended Cover

100% CODE COMPLIANT

SmartSeam® meets IBC EC 043-2020; NFPA 13, ASTM E84 Class A; FM-4652; UL 723S compliance standards.



FLAME RETARDANT



ANTISTATIC



ANTIMICROBIAL



CODE COMPLIANT



INNOVATIVE SCRIM DESIGN



STRONG 4-PLY MATERIAL



HEAT REACTIVE THREAD



PROTECTIVE DUST CAP



SmartSeam®

100% CODE COMPLIANT

International Fire & Building Code Standards, UL 723S, & NFPA 13

Patented TuffWrap's SmartSeam® keeps fire sprinklers operational



SmartSeam[®]

100% CODE COMPLIANT SUSPENDED COVER

SAFETY • LIABILITY • COMPLIANCE

The new SmartSeam by TuffWrap is the only real choice for companies choosing to protect their brand during reroofing...



IBC 6-POINT CRITERIA

- Quality**
- Strength**
- Effectiveness**
- Fire Resistance**
- Durability**
- Safety**



APPROVED

SmartSeam is
FM 4652 approved.

SmartSeam[®] IAPMO
UEA ER-706



IBC's Six Areas of Code Compliance

SmartSeam Complies with IBC's Six Areas of Code

1 Quality

Audited manufacturing quality

2 Strength

Stays in place; Meets structural performance ASTM E330 procedure A (diff pressure test)

3 Effectiveness

Prevents dust/debris from entering protected space

4 Fire Resistance

Flame retardant – Acceptable flame propagation performance

5 Durability

Performs for the duration of the installation

6 Safety

Opens up per code and partially drops out, but does not impede sprinklers



SmartSeam[®]

100% CODE COMPLIANT SUSPENDED COVER



Code Compliant

Meets EC 043-2020 document of IBC six areas of code compliance requirements, NFPA 13 and FM 4652 approved.



Flame Resistant

Approved for installation below sprinkler systems; Reduces flame and smoke spread



Heat Reactive Seam

6' x 5' panels open quickly to allow sprinklers to activate in case of fire



Protective Dust Cap

Protective dust cap over the heat reactive seam provides extra dust and debris protection.



Antistatic

Mitigates electrostatic discharges (ESD) to protect against combustible dust



Antimicrobial

Protects against mold, mildew, and bacterial growth



Strong Four-Ply Material

Six mil thick, four-layer polyethylene material provides highest puncture resistance and tear strength



Innovative Scrim Design

Diagonal and perpendicular scrim orientation resists tearing

Patented TuffWrap's SmartSeam[®] keeps fire sprinklers operational.

SmartSeam[®] IAPMO
UEA ER-706



TUFFWRAP SOLUTION

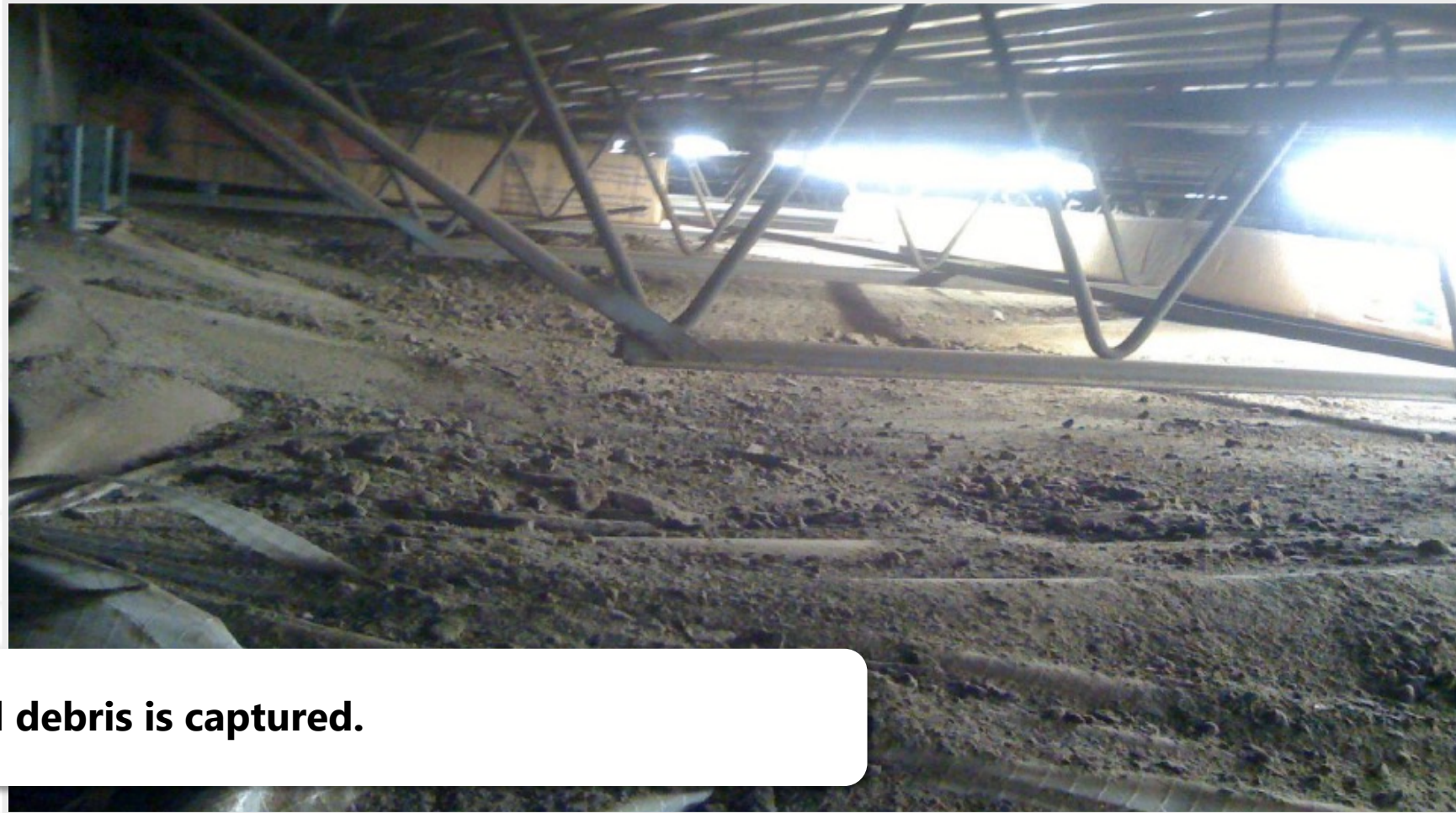
Suspended Cover SmartSeam®



Provides continuous and safe operations.

TUFFWRAP SOLUTION

Suspended Cover SmartSeam®



Ensure all debris is captured.

TUFFWRAP SOLUTION

Suspended Cover SmartSeam®



Protect areas below the ceiling where people work

C.O.R.E. Frameless Walls®

SECURE WORK ENVIRONMENTS WITH EFFECTIVE BARRIERS

Seamlessly Separate any Work Environment from the Construction Zone



FLAME RETARDANT



ANTISTATIC



ANTIMICROBIAL



CUSTOM FIT



INNOVATIVE SCRIM DESIGN



STRONG 4-PLY MATERIAL



NO STRUCTURAL SUPPORT NEEDED



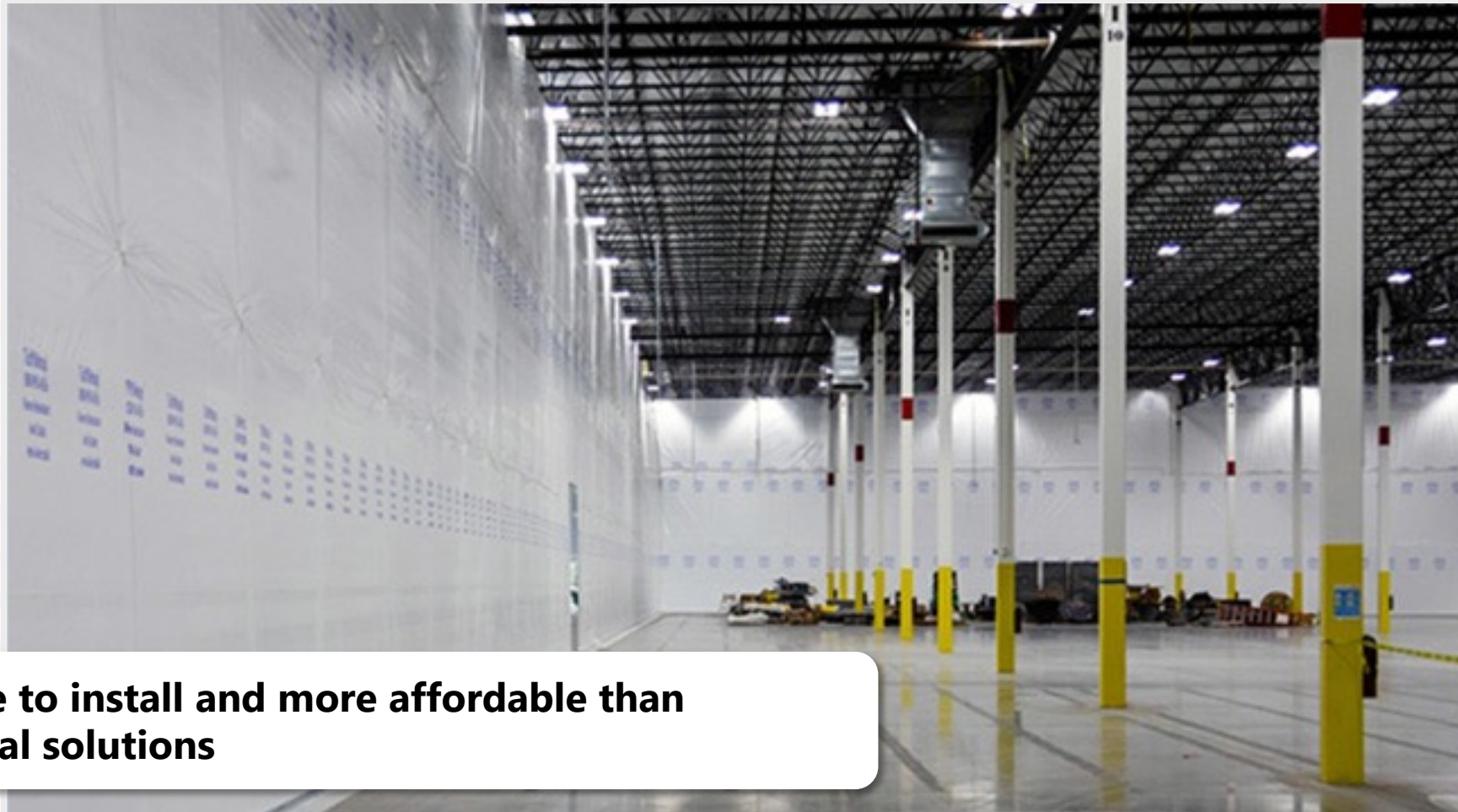
DOOR OPENINGS AVAILABLE



C – Cost effective; **O** – Original engineering; **R** – Resilient design; **E** – Efficient and versatile

TUFFWRAP SOLUTION

C.O.R.E. Frameless Walls® Interior Walls



Less time to install and more affordable than traditional solutions

TUFFWRAP SOLUTION

C.O.R.E. Frameless Walls® Interior Walls



Plastic walls ensure that the workplace is fully operational through any remodeling or renovation



Hybrid Walls

HYBRID WALLS OFFER EXTRA PROTECTION

Used when Separating the Facility from the Construction Zone is Not Enough



FLAME RETARDANT



ANTISTATIC



ANTIMICROBIAL



CUSTOM FIT



INNOVATIVE SCRIM DESIGN



STRONG 4-PLY MATERIAL



REINFORCED



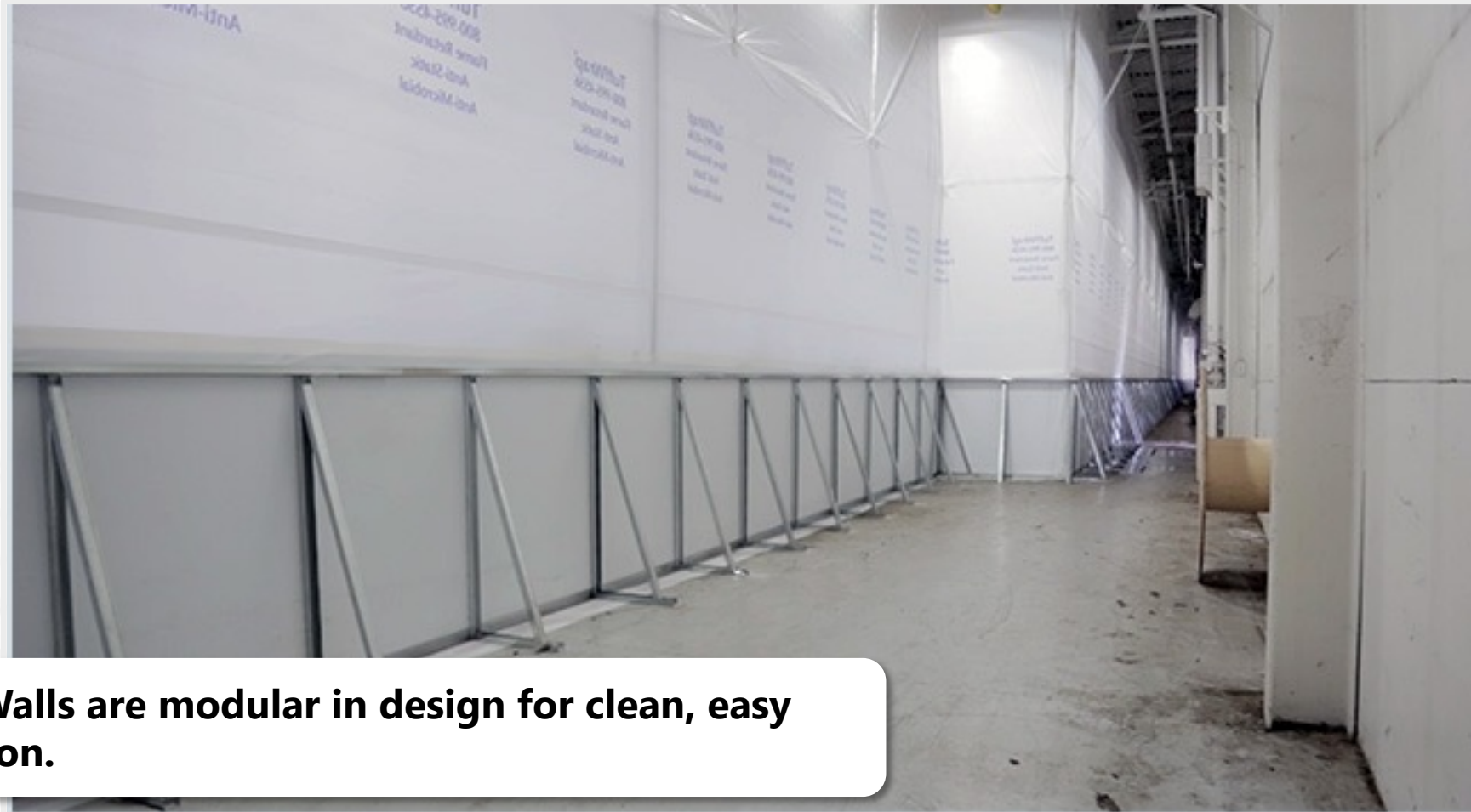
DOOR OPENINGS AVAILABLE



Provide Stability and Resilience in High Traffic Areas

TUFFWRAP SOLUTION

Hybrid Interior Walls



Hybrid Walls are modular in design for clean, easy installation.

TUFFWRAP SOLUTION

Hybrid Interior Walls



Provide stability and resilience to accommodate areas with heavy foot or vehicle traffic.

TUFFWRAP TOTAL ENCLOSURES

SmartSeam® Suspended Cover + C.O.R.E. Frameless Walls®

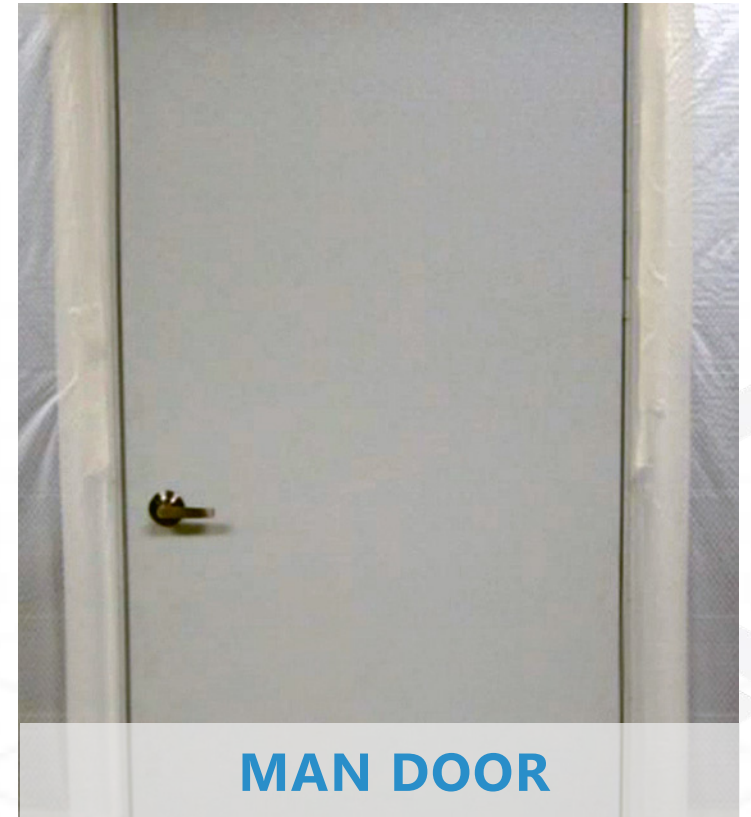


TOTAL ENCLOSURES KEEP DUST COMPLETELY IN OR OUT OF AN AREA.

**APPLICATIONS: Floor Resurfacing, Drain Replacements, Entryways,
Creating Sealed Walkways, Seclusion of Equipment**

FUNCTIONAL CONSTRUCTION DOORS

Customize with Construction Doors



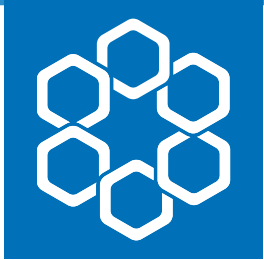
Scalable Construction Doors enable crew and vehicles to move in and out of the worksite efficiently.

CUSTOM APPLICATIONS

- High Structure Dust Removal
- Static-Sensitive Area Protection
- Skylight Safeguard Systems
- Air Flow Ventilation
- Debris Netting
- TuffTape

Custom Applications are often part of a solution to meet a job site's unique challenges.

WHY CLIENTS RAVE ABOUT TUFFWRAP



**Pioneers in
dust & debris
containment.**
20+ years of
growth and
success



**Covers North
America**
Sales, Project
Managers &
Install Teams

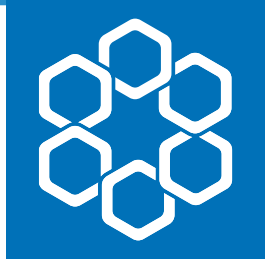


**Project
Solutions**
Customized
approach to
specific job
requirements



**Highly Trained
Install Team**
handles any
job and time
frame

WHY CLIENTS RAVE ABOUT TUFFWRAP



In-house
Safety
Program and
full time
Safety
Manager



No subs,
only
TuffWrap
employees



Dedicated
Operations
Team
manages all
jobs/sources
supplies



Code
Compliant
SmartSeam®
keeps fire
sprinklers
operational

QUESTIONS & ANSWERS

- Addressing your challenges
- Scheduling concerns
- Mitigating risks



INNOVATION IN DUST &
DEBRIS CONTAINMENT

NEXT STEPS

- Specific step
- Action item
- Action item
- Proposed schedule



INNOVATION IN DUST &
DEBRIS CONTAINMENT



TuffWrap[®]
Protecting People, Products & Property

Tuff on Dust, Debris and Weather

(800) 995-4556 | www.tuffwrap.com

**Aerospace | Food & Beverage | Industrial & Commercial |
Manufacturing | Pharmaceutical | Retail | Warehouse & Distribution**

TuffWrap[®], SmartSeam[®], Frameless Walls[®], C.O.R.E. Frameless Walls[®] and TuffPanel[®] are registered trademarks of TuffWrap Installations, Inc. Pocket Door[™], Hybrid Wall[™] and the Ring Design[™] are trademarks of TuffWrap Installations, Inc.