



TuffWrap[®]
Protecting People, Products & Property

TEMPORARY CONTAINMENT SOLUTION SPECIALISTS

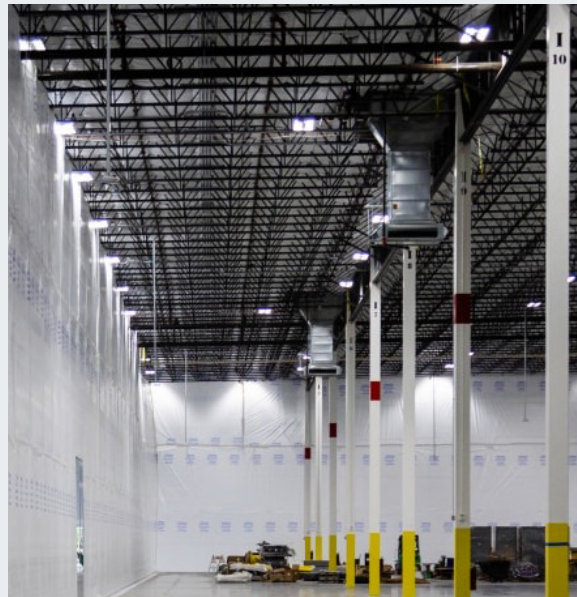
TUFF ON

DUST, DEBRIS & WEATHER

AEROSPACE | FOOD & BEVERAGE | INDUSTRIAL & COMMERCIAL | MANUFACTURING | PHARMACEUTICAL | RETAIL | WAREHOUSE & DISTRIBUTION



SUSPENDED COVER



INTERIOR PROTECTION



EXTERIOR PROTECTION

Specialists in Temporary Containment Solutions

TuffWrap® Installations is the North American leader in innovative temporary dust, debris, and construction containment solutions, keeping facilities operational and providing protection during construction. Specialists in Temporary Containment Solutions, TuffWrap® Installations provides suspended cover, interior, and exterior protection during re-roofing and renovation projects in the United States and Canada. In addition, when jobs require specialized installation, we utilize our custom applications to fit individual job requirements. With over 20 years of experience in flexible, individualized contamination solutions, the TuffWrap Project Team offers consistency, transparency, adaptability, and safety. In addition, only TuffWrap employees work on our job sites. Our “no subcontractor” policy means uniform safety training and enhanced product knowledge on every project. TuffWrap Installations’ pioneering solutions keep facilities safe and operational during construction.

Innovated by TuffWrap. Installed by TuffWrap.

Since 1999, TuffWrap Installations has been transforming the dust and debris containment industry with its market-leading interior protection solutions. The purpose of TuffWrap products and services has been to protect a company—their employees and their inventory—from contamination, dust, and debris. Since that time, TuffWrap has continued to lead the industry by inventing new products and services that not only contain debris but also solve other issues like foul weather and facility shutdowns. TuffWrap services have expanded to include suspended cover, interior protection, and exterior protection. TuffWrap solutions to a customer's unique job requirements may include combining services and custom application products to contain dust, debris, and weather. TuffWrap protects people, products, and property while safely keeping facilities operational.

TuffWrap focuses on the customer and meeting their needs. One problem TuffWrap customers want to avoid is the complete shutdown of operations during construction. As companies run multiple shifts and even 24/7 production lines, the ability to minimize downtime is vitally important. The TuffWrap Project Team customizes its approach and creates solutions to address the specific requirements of each assignment. Experienced and knowledgeable about our industry and products, they solve issues that arise during construction projects. Safety, reliability, and best practices make the difference when it comes to protecting our clients' people, products, and property.

TuffWrap products enable a company's operations to stay functional during ongoing construction or renovation work. All TuffWrap materials are anti-static, antimicrobial, and fire-resistant. This makes TuffWrap products suitable for highly sensitive areas like data centers where anti-static properties are vitally important. While appropriate for many environments, the products' antimicrobial properties are important in the food and beverage and pharmaceutical industries. Meanwhile, the fire-resistant material will not contribute to a flame. It will burn, but it won't add to fire and make it grow. In addition, TuffWrap's patented Smart Seam suspended cover is 100% code compliant for installation below fire sprinklers. In case of a fire, SmartSeam keeps fire sprinklers operational. Engineered to be flexible and durable TuffWrap products are capable of being customized solutions.

Setting Code Compliance Standards



TuffWrap® Installations and IAPMO working together. How do you know if a product is suitable for your intended use? When it comes to building products...you shouldn't need to guess. TuffWrap knows what's required and has been working with IAPMO in setting code compliance standards for the industry.

TuffWrap Installations has been working with IAPMO, professional credentialing services, and the company behind Uniform ES reports to set the standards for code compliance. We identify requirements and participate in the creation of a consensus document and specific testing to prove compliance with the code sections. These include flame and smoke performance, stability, and structural performance requirements.





TuffWrap Project Team

SAFETY, RELIABILITY AND BEST PRACTICES - OUR CLIENT RELATIONSHIPS ARE A PRIORITY

Committed to the Success of Your Project



SAFETY



FLEXIBLE SCHEDULING



COMMUNICATION



NO SUBCONTRACTORS

Project Team - People Make the Difference. The TuffWrap® project management team provides solutions to protect companies from dust and debris contamination during construction. We understand that no two projects are alike, and therefore customize our approach to meet the specific requirements of each assignment. From the front of our office to the top of our lifts, TuffWrap employees are dedicated to providing the highest quality products and services.

The TuffWrap® Installation Team brings you:

- A nationwide, regionally located, sales and project management team
- An expert installation team to meet your schedule and job size requirements
- An in-house safety program and full-time safety manager
- A dedicated Project Manager and Project Coordinator
- Proprietary Installation Methods





SAFETY FIRST

At TuffWrap® Installations
Safety is a Priority

RAISE THE AWARENESS

At TuffWrap®, we refuse to settle when it comes to safety. That's why we have invested in multiple aspects of our business in order to keep our team and our work environment safe. As a result, TuffWrap's Safety Program crosses our entire company and incorporates everything from HQ standard procedures to worksite specific programs. Key requirements include:

- OSHA 10/30 hour training for crew and crew leaders
- Lift certifications
- FA/CPR training

In addition, we have implemented our own "Raise the Awareness" (RTA) program which is followed on each job site. Potential hazards specific to that job are reviewed with the crew. The crew acknowledges those hazards and reviews what to do to stay safe under those circumstances.

TuffWrap's Safety Manager oversees all of our safety programs and ensures they are properly developed, initiated and followed ongoing. We feel strongly that safety can't be addressed from HQ alone. Our Safety Manager is often on location making worksite safety observations and feedback a priority.

In our industry, meeting qualifications is essential. We are proud to say that we have our own in-house Safety Committee that works in coordination with our Safety Manager and is certified through the State of PA. In addition, TuffWrap is an ISNetwork Member Contractor.





INNOVATION IN DUST & DEBRIS CONTAINMENT

Patented fire code compliant TuffWrap's SmartSeam® keeps fire sprinklers operational.



CODE COMPLIANT



ANTI-STATIC



FLAME RESISTANT



ANTIMICROBIAL



HEAT REACTIVE SEAM



STRONG 4-PLY MATERIAL



PROTECTIVE DUST CAP



INNOVATIVE SCRIM DESIGN

SmartSeam® is compliant with the International Building Code (IBC) and the International Fire Code (IFC). It is FM approved and UL classified for installations below the sprinkler systems and meets NFPA 13, ASTM E84 Class A.

SmartSeam® Suspended Cover is code compliant to meet EC 043-2020 document of IBC six areas of code compliance requirements, NFPA 13 and FM 4652 approved. SmartSeam® keeps facilities safe and operational during re-roofing and construction projects. It is **flame-resistant** and **approved for installation below sprinkler systems**. Made from a four-ply material, six-mil thick polyethylene, SmartSeam® incorporates a diagonal and perpendicular scrim design to resist tearing and provide the highest puncture resistance and tear strength. In addition, it is antimicrobial to protect against mold, mildew, and bacterial growth and anti-static to mitigate electrostatic discharges (ESD) to combat combustible dust. In case of a fire, the heat-reactive seam, made up of 6' x 5' panels, opens quickly to allow sprinklers to activate in case of fire. A protective dust cap over a heat-reactive seam provides extra dust and debris protection. SmartSeam® suspended cover meets the highest testing standards.





C.O.R.E. Frameless Walls®

**SEAMLESSLY SEPARATE ANY WORK ENVIRONMENT
FROM THE CONSTRUCTION ZONE.**

Secure Work Environments with Effective Barriers



FLAME RESISTANT



ANTI-STATIC



ANTIMICROBIAL



CUSTOM FIT



INNOVATIVE SCRIM DESIGN



STRONG 4-PLY MATERIAL



NO STRUCTURAL
SUPPORT NEEDED

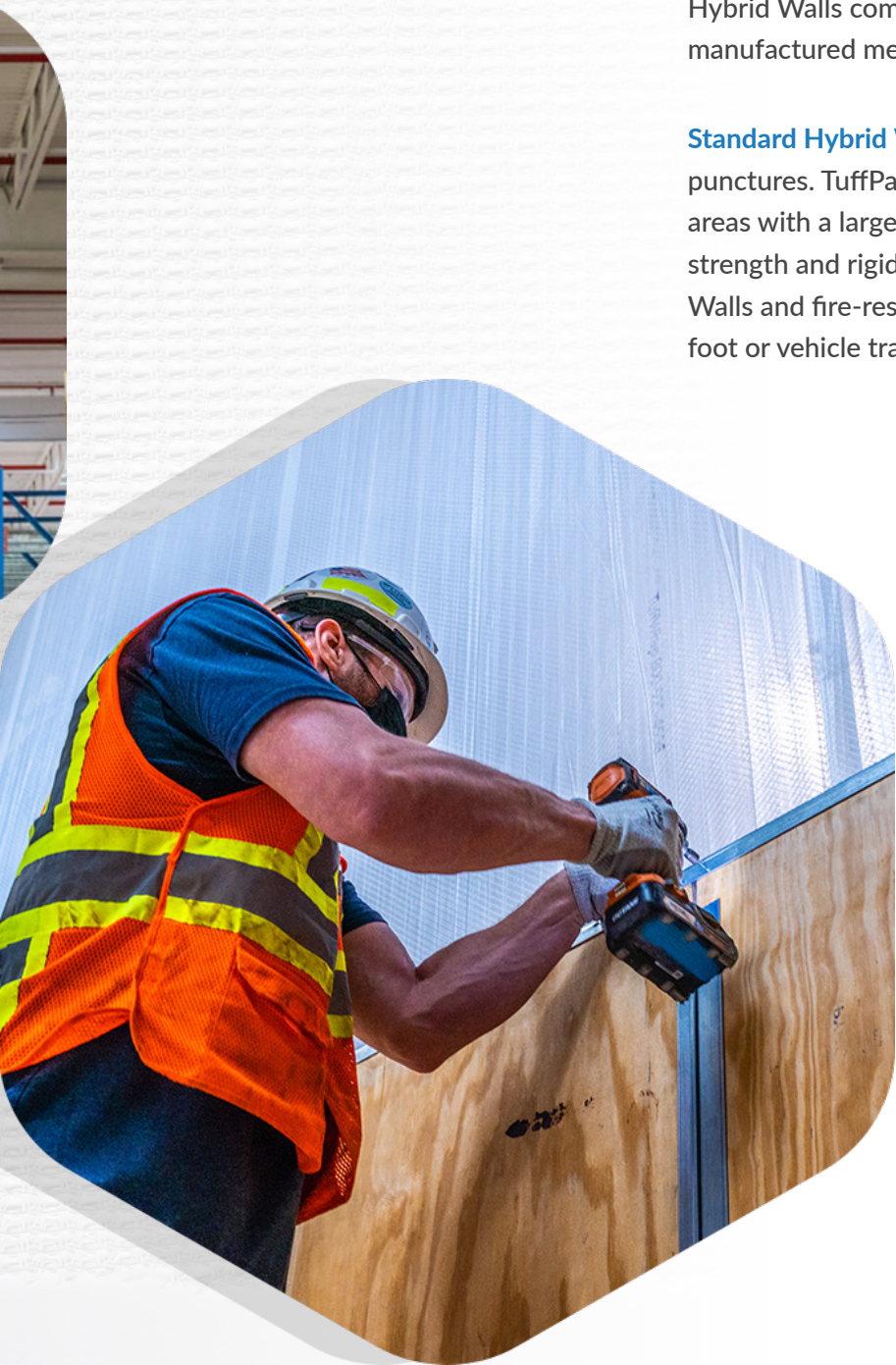


DOOR OPENINGS AVAILABLE

TEMPORARY WALLS — ANY PROJECT. ANY SIZE. ANY DURATION. With C.O.R.E. Frameless Walls®, project size doesn't matter, and neither does duration. TuffWrap's C.O.R.E. Frameless Walls are customizable and safely separate any work environment from the construction zone. They're quicker to install and more cost-effective than traditional solutions, which rely on expensive frames and labor-intensive materials like plywood.

TuffWrap's temporary plastic walls ensure that the workspace is fully operational through any remodeling or renovation. **C.O.R.E. Frameless Walls** are engineered in the **United States** by **TuffWrap Installations** to offer the **best dust and debris protection while avoiding downtime**. They take less time to install and are more affordable than traditional solutions. The walls are anti-static, antimicrobial, and flame-resistant.





Hybrid Walls and Industrial Hybrid Walls are two types of hybrid dust walls that provide stability and resilience in high-traffic areas. Hybrid Walls are cost-effective and durable. In addition, they help maintain a professional appearance during construction and protect inventory in the warehouse and retail settings. Hybrid Walls combine a C.O.R.E. Frameless Wall with TuffWrap's rigid TuffPanel® and with or without a pre-manufactured metal brace. Hybrid Walls are modular in design for clean, easy installation.

Standard Hybrid Walls have a four-foot high TuffPanel base attached to the wall to protect against scuffs and punctures. TuffPanel® is designed for dust and debris containment applications requiring more rigidity and for areas with a large volume of personnel and equipment traffic. **Industrial Hybrid Walls** provide even greater strength and rigidity than the standard Hybrid Wall that uses TuffPanel. A combination of C.O.R.E. Frameless Walls and fire-resistant plywood, reinforced with eight-foot plywood sheets to accommodate areas with heavy foot or vehicle traffic.

Hybrid Walls

USED WHEN SEPARATING THE FACILITY FROM THE CONSTRUCTION ZONE IS NOT ENOUGH.

Hybrid Walls offer Extra Protection



FLAME RESISTANT



ANTI-STATIC



ANTIMICROBIAL



CUSTOM FIT



INNOVATIVE SCRIM DESIGN



STRONG 4-PLY MATERIAL



REINFORCED



DOOR OPENINGS AVAILABLE



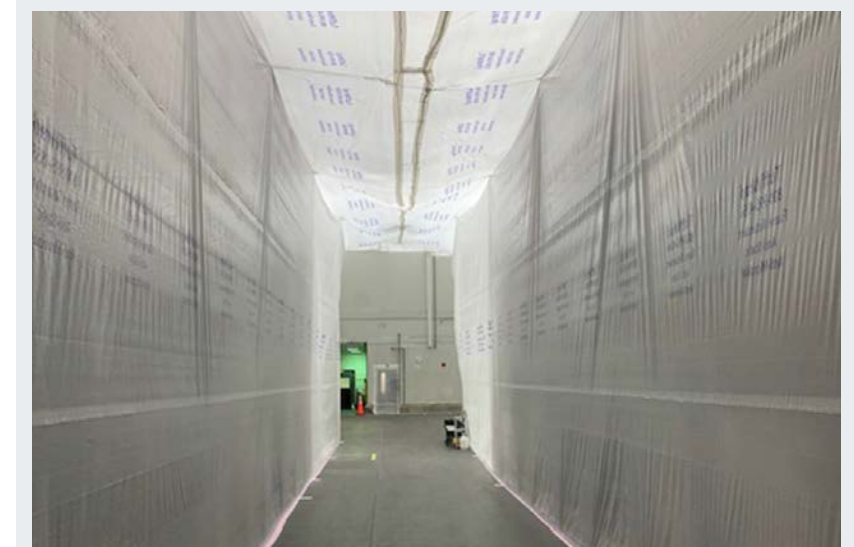
Total Enclosures

TuffWrap's Total Enclosures are the best solution to defend against dust and debris during construction. TuffWrap temporary walls and suspended cover are combined to create an enclosed workspace preventing the most aggressive contamination for industries where contamination, delays, and closures are a concern.

Benefits of using a **Total Enclosure Solution** include:

- Installed around the entire facility.
- Completely sealed around all penetrations.
- Antimicrobial, anti-static, and flame-resistant reinforced polyethylene.
- Code-compliant SmartSeam® combined with versatile C.O.R.E. Frameless Walls.

A total enclosure offers versatility in situations where conventional methods will not work. Combining the suspended cover and the dust wall provides a total seal for the affected area, providing 100% protection from dust migration. A Facility staying up and running 24 hours a day must remain operational during construction. Innovative solutions like total enclosures and tunnels provide protection, keeping operations running safely during construction.





Construction Doors

Construction Doors enable crew and vehicles to move in and out of the worksite efficiently. Providing access points when installing dust and debris containment can be almost as important as the temporary walls themselves. From versatile zipper doors to sliding pocket doors or man doors, we've got the solution to allow facilities to operate during construction or repairs. TuffWrap offers customizations to temporary interior walls with construction doors. Crews, personnel, and vehicles have easy access to the worksite.

Benefits of **Construction Door Customizations** include:

- Scalable to a multitude of sizes.
- Designed to allow access without hindering protection.
- Quick and efficient for crews and vehicles.
- Available in different formats to best fit your job.

A **Pocket Door™** is a specialty door customizable to accommodate all types of access. Created specifically to meet your facility's requirements and assembled to slide easily out of the way and back into place, it complements any TuffWrap temporary wall. The Pocket Door has a customizable size range perfect for equipment and people for frequent or long-term use.

Zipper Doors are the most commonly used method to access a worksite during dust and debris containment. While they are easy and inexpensive to install, they are limited to temporary use. A quick solution when needed, the size is usually custom to accommodate machinery, vehicles like lifts, or people.

Man Doors are an option if the containment involves an area in the building that requires a locking door. Many facilities have security requirements for proprietary or employee-only access reasons. They provide easy access for people while allowing for greater security during the construction project.

TuffWrap EXT

TUFFWRAP® EXT EXTERIOR TEMPORARY WALLS.
THE WALLS THAT STAND UP TO THE WEATHER.

Protection from Foul Weather



FLAME RESISTANT



CUSTOM FIT



PROTECTIVE WORK CREWS



EXTENDED WORK SEASON



INNOVATIVE SCRIM DESIGN



STRONG 7-PLY MATERIAL



PROTECTIVE DUST CAP

TuffWrap® EXT EXTENDS CONSTRUCTION AND REDUCES DOWNTIME. The resilient design protects the work crew and keeps facilities running smoothly. EXT's most beneficial effect is extending the construction season and reducing downtime due to weather. Tarps, plywood walls, and shrink wrap are all common ways to keep seasonal weather out, but only one solution offers superior protection without drawbacks. TuffWrap® EXT can withstand steady wind of up to 30 miles per hour and brief gusts of up to 45 miles per hour.

Custom mounting hardware, designed and manufactured by TuffWrap, allows EXT to be installed almost anywhere, even for projects above 50 feet high. EXT's engineered polyethylene can be custom fit and is made from strong, seven-ply material that provides the highest puncture resistance and tear strength. It has innovative diagonal and perpendicular scrim design and antimicrobial properties protecting against mold, mildew, and bacterial growth. It is flame and UV resistant in addition to protecting work crews.





CUSTOM APPLICATIONS

STATIC-SENSITIVE AREA PROTECTION. TuffWrap temporary containment solutions feature an anti-static additive to protect from Electrostatic Discharges (ESDs). TuffWrap offers a variety of solutions to keep your facility safe and productive when volatile dust and static pose serious risks.

HIGH STRUCTURE DUST REMOVAL (HSDR). HSDR services are commonly used during take down of suspended cover to remove project-related dust and debris from high, horizontal surfaces, avoiding additional problems.

NETTING. Debris Netting and Fall Netting is a solution used when the threat of dust migration is not critical. It is a safe and reliable solution when chunks of the roof deck, insulation, or other materials may fall during the project and is not disturbed by airflow or outdoor elements. A combination of Special Netting and SmartSeam suspended cover is used to capture small particles and larger debris.

AIRFLOW VENTILATION. Dust and debris contamination within temporary walls and ceilings can affect air quality when controlling an environments airflow with ventilation. TuffWrap follows OSHA's standards for safety and health information about indoor air quality to create a solution that meets a jobs unique requirements.

SKYLIGHT SAFEGUARD SYSTEMS. A skylight screen protection system can mitigate fall hazards when a facility needs safe and easy access to an elevated work area. TuffWrap follows OSHA regulations for the Skylight Safeguard Systems designed to custom fit the dimensions required for the project. Used with SmartSeam, it provides rooftop fall protection.

TUFFTAPE. TuffWrap's TuffTape™ protective containment tape seals out dust and dirt. It is an adhesive polyethylene tape used for sealing around protrusions, seams, and zippers.





TUFFWRAP® INSTALLATIONS. TUFF ON DUST, DEBRIS & WEATHER.

TuffWrap® Installations dust, debris, and construction containment solutions keep operations and production lines safe, clean, and productive during re-roofing, renovation and reconstruction projects. We offer a variety of temporary barrier and suspended cover products that are anti-static, antimicrobial, and flame resistant.

In our industry, **meeting qualifications is essential.** We are proud to say that we have our own in-house **Safety Committee** that works in coordination with our **Safety Manager** and is certified by the State of PA. In addition, TuffWrap® Installations is audited and certified by **IAPMO Uniform ES**, an accredited certification and testing company. Including ongoing compliance with audits and recertification of the use of the approved materials and guidelines in the IBC document. TuffWrap meets full compliance with **FDA**, **GMP**, and **IBC's EC 043-2020's six areas of code requirements**, and is **NFPA 13** and **FM 4652 approved**.



INNOVATIVE TUFFWRAP INSTALLATIONS PRODUCTS

SmartSeam® Suspended Cover • C.O.R.E. Frameless Walls® • TuffWrap® Hybrid Walls • TuffWrap EXT® Exterior Protection
TuffWrap® Total Enclosure Solution • HSDR (High Structured Dust Removal) • TuffWrap® Functional Construction Doors

SmartSeam® Suspended Cover



CODE
COMPLIANT



ANTI-STATIC



FLAME
RESISTANT



ANTIMICROBIAL



HEAT REACTIVE
THREAD



STRONG 6-MIL
MATERIAL



PROTECTIVE
DUST CAP



INNOVATIVE
SCRIM DESIGN

C.O.R.E. Frameless Walls®



FLAME
RESISTANT



ANTI-STATIC



ANTIMICROBIAL



CUSTOM FIT



INNOVATIVE
SCRIM DESIGN



STRONG 6-MIL
MATERIAL



NO STRUCTURAL
SUPPORT NEEDED



DOOR OPENINGS
AVAILABLE

TuffWrap® Hybrid Walls



FLAME
RESISTANT



ANTI-STATIC



ANTIMICROBIAL



CUSTOM FIT



INNOVATIVE
SCRIM DESIGN



STRONG 6-MIL
MATERIAL



DOOR OPENINGS
AVAILABLE



REINFORCED

TuffWrap EXT® Exterior Protection



FLAME
RESISTANT



CUSTOM FIT



INNOVATIVE
SCRIM DESIGN



STRONG 10-MIL
MATERIAL



PROTECT WORK
CREWS



EXTEND WORK
SEASON

TuffWrap® Installations, Inc.

2080 Detwiler Rd., Harleysville, PA 19438

(215) 256-6953 | (800) 995-4556 | tuffwrap.com

TuffWrap® Canada ULC | (844) 995-4556 | tuffwrap.ca



TuffWrap, TuffPanel, SmartSeam, and C.O.R.E. Frameless Walls are registered trademarks of TuffWrap Installations, Inc. Pocket Door, Hybrid Wall, and the Ring Design are trademarks of TuffWrap Installations, Inc.



Made in USA

TuffWrap® Installations, North America's leading provider of innovative dust and debris containment solutions, is committed to customer satisfaction and safety. TuffWrap meets full compliance of FDA, GMP, IBC's EC 043-2020's six areas of code requirements and is NFPA 13 and FM 4652 approved.